



Ensuring unique environment for human embryo culture

# Mini MIRI®

Dry and Humidity Incubator

*This equipment is a CE-marked device and is in conformity with the essential requirements of the medical devices EU regulation 2017/745.*

**Design Excellence - Superior Quality**

Mini MIRI® - a compact incubator

# table of contents

---

Mini MIRI® Multiroom IVF Incubator .....	4
Comes in two models .....	6
Control panel, display and data logging software .....	8
Accessories .....	9
General Specifications .....	10
Ordering Information .....	10



# Mini MIRI®

“A compact incubator”



*Mini MIRI® – No compromises, built on  
the robust and reliable MIRI® design*

Built on the robust and reliable MIRI® design, the Mini MIRI® Incubator provides a stable culture environment. The compact design and direct heat regulation further translate to faster temperature and gas recovery.

## FEATURES:

---

### Heated Lid

- Prevents condensation.
- Enhances temperature regulation and recovery.
- Excellent uniformity between the lid and the bottom.
  - Uniformity:  $\pm 0.1$  °C

### Direct Heat Transfer

- Provides superior temperature stability.

---

### Dual Chamber System

- Any disruption (e.g. temperature drop after opening the lid) has zero impact on the rest of the system. Furthermore, calibration is much simpler since there is no crossover of heat from adjacent chamber.
- Small chamber volume allows for quick gas and temperature recovery. It takes less than three (3) and one (1) minute respectively when the lid has not been opened for more than 30 sec.

---

### Ergonomic Rotatory Key

- The Rotatory Key is used to access the menu, toggle between the settings and set parameter values.

# Superior Incubation Environment

The Mini MIRI® comes with 4 temperature-controlled points, 2 for each chamber - one at the bottom and one on the heated lid. The heated lid is an added bonus as it improves temperature uniformity throughout the Mini MIRI®.



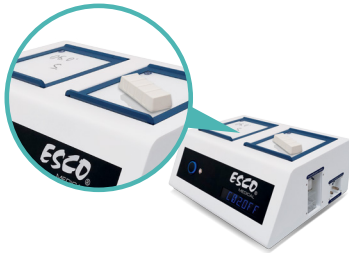
**Gas Recovery:**  
Less than three (3) minutes\*

**Temperature Recovery:**  
Less than one (1) minute\*

## Fast Recovery

One of the benefits of our multiroom incubators is their fast recovery time after opening the lid. This is crucial in order to maintain optimal parameters for embryo incubation.

\*If the lid has not been opened for more than 30 sec.



## The little details count

IVF practitioners deal with precious and sensitive embryos, and often, the little details make a big difference. The Mini MIRI® has a large LED display that can be easily seen from a distance. Also, the glass lid tops, while acting as chamber insulators, can be written on — a very useful feature for organization.



## A Built-In Gas Mixer

The built-in gas mixer and the high-performance CO<sub>2</sub> and O<sub>2</sub> sensors allow to input pure gases and accurately control the gas phase composition within the chambers. Also, it gives flexibility over the desired gas input.\*



## Stress-free Validation

Built-in PT1000 Temperature Sensors and gas sampling ports are completely independent from the main circuitry. Because of this the Mini MIRI® can be connected to an external device such as the EscO MIRI® GA for gas and temperature validation.

\* Input of pure gases is recommended

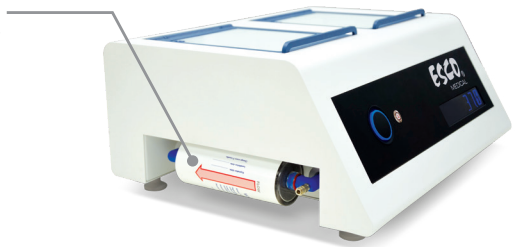
# Mini MIRI® for your culture's environmental needs.



## Mini MIRI® Dry

### High quality airstream

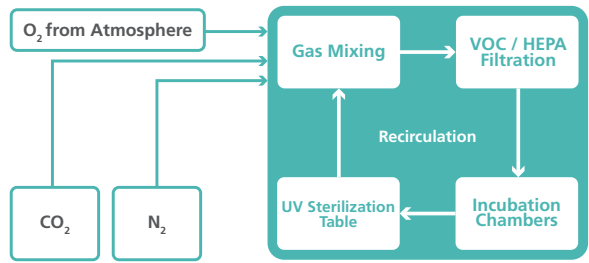
The filter module can be easily replaced once used. The gas in the Mini MIRI® Dry is continuously recirculated through a VOC/HEPA filter and a UV-C (254 nm) light that sterilizes the recirculated airstream before it passes through the filter.



To learn more about the Mini MIRI® Dry, scan this QR code.



### Airflow Diagram



## Mini MIRI® Humidity

Built-in passive humidification system.

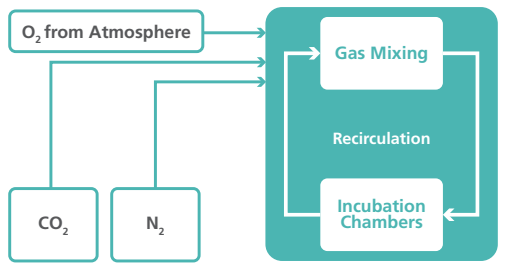
The water bottle is located on the side of the device for easy refilling and control of the water level.



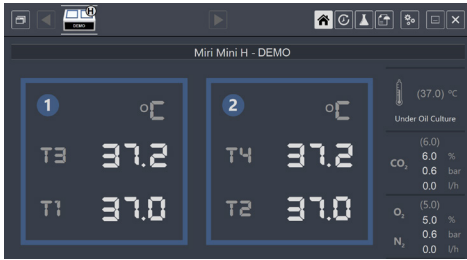
To learn more about the Mini MIRI® Humidity, scan this QR code.



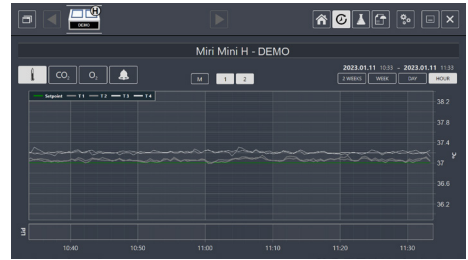
### Airflow Diagram



# Full-featured and user-friendly Control panel, display, and data logging software



Complete parameters are displayed. Histories of any alarm events are logged



The data logger stores continuous performance data of the machine throughout its use. These can be viewed in graphs



Conditions that put the Mini MIRI® Dry and Mini MIRI® Humidity into alarm state are recorded. It is possible for the software to send email alerts as well

**The Mini MIRI® Dry and Mini MIRI® Humidity can be connected to an easy to-use, feature-packed data logging software installed on any ordinary PC and connected via USB**

Multiple machines can be connected and managed from a single computer. All real-time parameters of the machine can be conveniently viewed. These include the temperature of all monitored temperature and gas concentration points, gas input pressures, gas flow rates, current gas readings, and all setpoints.

All performance data of the machine including alarms are continuously logged and can be viewed in graphs. The data logger also automatically generate reports weekly which makes it more convenient for the user.





# Accessories



## Heating optimization plates

Each chamber contains a heating optimization plate to facilitate heat transfer directly to the culture dishes.

- It is removable for easier cleaning.
- A selection of heating optimization plates is available for various dish sizes.

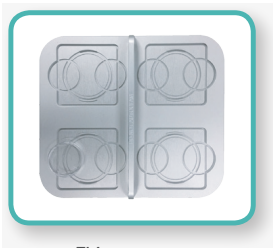
## Total Capacity

Heating plates customized for several types of dishes:

- 4 x Falcon® Ø 50/60 mm
- 8 x Falcon® Ø 35 mm
- 4 x Nunc™ Ø 54/60mm
- 8 x Nunc™ Ø 35 mm
- 4 x Vitrolife Dishes
- 4 x LifeGlobal® GPS Dishes
- 4 x SparMED Oosafe® 4-well dishes
- 4 x SparMED Oosafe® Ø 55/60 mm
- 8 x SparMED Oosafe® Ø 35 mm
- 6 x BIRR Ø 35 mm
- 6 x BIRR Ø 60 mm



The dishes fit into the inserts so that the heat is directly transferred to the media.



Nunc™



Falcon®



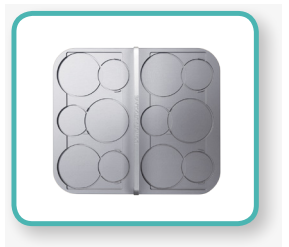
Vitrolife



LifeGlobal®  
GPS Dishes



SparMED - Oosafe®



BIRR

# General Specifications



## Mini MIRI® Multiroom IVF Incubators

Model	Mini MIRI® Dry	Mini MIRI® Humidity
Overall Dimensions (W x D x H)	525 x 420 x 230 mm (20.7 x 16.5 x 9.1")	
Chamber Dimensions	200 x 176 x 25 mm (7.9 x 6.9 x 1")	
Power Supply	115/230V, 50/60 Hz	
Power Consumption	160 W	
Temperature Control Range	24.9 – 40.0 °C	
CO <sub>2</sub> Gas Consumption	<2 L/h	< 4 L/h
N <sub>2</sub> Gas Consumption	<8 L/h	<12 L/h
Input Gas Pressure	0.4 – 0.6 bar (5.80 – 8.70 PSI)	
CO <sub>2</sub> Control Range	1.9 % – 9.9%	
O <sub>2</sub> Control Range	3.9 % – 19.9%	
Net weight	22 kg (48.5 lbs)	
Shipping Weight	30 kg (66.1 lbs) (including the pallet's weight)	
Shipping Dimensions	630 x 525 x 500 mm (24.8 x 20.7 x 19.7") (device on the pallet)	

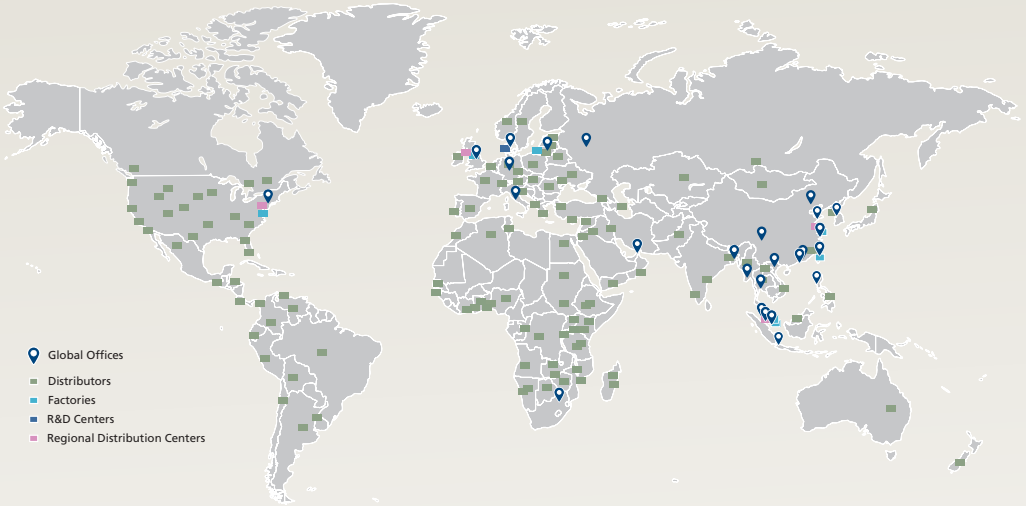
\* Under normal condition (CO<sub>2</sub> setpoint reached at 6.0%, all lids closed).

\*\* Under normal condition (O<sub>2</sub> setpoint reached at 5.0%, all lids closed).

## Ordering Information

Item Code	Model Code	Description
<b>Device</b>		
2070143	MRI-MINI-D-8	Mini MIRI® Dry Multiroom Incubator, 230V, 50/60Hz
2070144	MRI-MINI-D-9	Mini MIRI® Dry Multiroom Incubator, 115V, 50/60Hz
2070155	MRI-MINI-H-8	Mini MIRI® Humidity Multiroom Incubator, 230V, 50/60Hz
2070156	MRI-MINI-H-9	Mini MIRI® Humidity Multiroom Incubator, 115V, 50/60Hz
<b>Accessories</b>		
1320011	MRA-1007	VOC/HEPA filter (recommended to be changed every 3 months)
1320142	MRI-DATA	Datalogger Package with an Intel® NUC Box, monitor etc.
1320045	MRI-GA	MIRI® GA CO <sub>2</sub> / O <sub>2</sub> & Temperature Validation Unit, 115V / 230V (only for Mini MIRI® Dry Multiroom Incubator)
<b>Heating Optimization Plates</b>		
1320003	MRA-FD	Heating optimization plate for Falcon® Dishes
1320004	MRA-ND	Heating optimization plate for Nunc™ Dishes
1320070	MRA-VD	Heating optimization plate for Vitrolife Dishes
1320099	MRA-NID	Heating optimization plate for Nipro™ Dishes
1320100	MRA-LD	Heating optimization plate for LifeGlobal® GPS Dishes
1320101	MRA-PD	Heating optimization plate without footprint for Plain Dishes
1320118	MRA-OD	Heating optimization plate for SparMED Oosafe®
1320507	MRA-BIRR	Heating optimization plate for BIRR Dishes

# ESCO LIFESCIENCES GROUP



- 📍 Global Offices
- Distributors
- Factories
- R&D Centers
- Regional Distribution Centers



## Esco Medical Products

- MIRI® Multiroom Incubator
- MIRI® Humidity Multiroom Incubator
- MIRI® II-12 Multiroom Incubator
- Mini MIRI® Dry Incubator
- Mini MIRI® Humidity Incubator
- MIRI® TL6 Time-Lapse Incubator
- MIRI® TL12 Time-Lapse Incubator
- Multi-Zone ART Workstation
- MIRI® Laminar Flow Cabinet
- MIRI® Evidence RFID Traceability System
- CelCulture® CO<sub>2</sub> Incubator
- MIRI® (G) Gas and Temperature Validation Unit
- MIRI® AVT
- CultureCoin®

*Infertility is a problem that has a significant social, psychological, and economic impact on affected individuals and couples. It is a global concern that knows no race or creed. It has been estimated that 1 in 6 couples struggle with infertility at least once in their lifetime.*

*Esco Medical is one of the divisions of the Esco Lifesciences Group. We provide innovative technological solutions for fertility clinics and laboratories. We aim to become the leading manufacturer of high-quality equipment such as long-term embryo incubators, ART workstations, anti-vibration tables, and time-lapse incubators.*

*Our products are designed with the Silent Embryo Hypothesis as a guiding principle. The Silent Embryo Hypothesis states that the less disturbed an embryo can remain, the better its developmental potential will be. Most of our products are designed in Denmark and made in the EU. Our primary focus is to increase pregnancy success rates and patient satisfaction.*



**Esco Medical Aps**  
Kringellet 10, 8250 Egaa, Denmark  
medical@escolifesciences.com  
[www.esco-medical.com](http://www.esco-medical.com)

**Esco Micro Pte Ltd (Headquarters)**  
19 Changi South Street 1, Singapore  
486 779 • Tel +65 6542 0833

**Esco Global Offices:** Bangladesh | China | Denmark | Germany | Hong Kong | Indonesia | Lithuania | Malaysia | Myanmar | Philippines | Russia | Singapore | South Africa | South Korea | Taiwan | Thailand | UAE | UK | USA | Vietnam



Designed in Denmark



Made in the E.U.

9010306\_Mini MIRI®\_Brochure\_A5\_vT\_102424

Esco can accept no responsibility for possible errors in catalogues, brochures and other printed materials. Esco reserves the right to alter its products and specifications without notice. All trademarks and logos in this material are the property of Esco and the respective companies.

